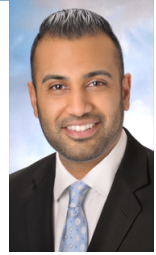


---

## JOSHUA DANIEL, M.D.



(267) 495-7955  
[Joshualahori@yahoo.com](mailto:Joshualahori@yahoo.com)

1324 Woodlynne Blvd  
Linwood, NJ 08221

### Education

Neurology Residency (July 2013 - June 2016)  
JFK Hospital - Seton Hall University  
Edison, NJ

Internal Medicine Internship (July 2012 - June 2013)  
St. Michael's Medical Center  
Newark, NJ

Doctorate Of Medicine (August 2006 - May 2012)  
St. George's University  
Grenada, West Indies

Bachelors in Science - Biomedical Sciences (August 2002 - May 2006)  
Drexel University  
Philadelphia, Pennsylvania

### Current Position

Shore Physicians Group / Shore Medical Center  
Division Chief of Neurology  
Stroke Director  
Attending Neurologist  
(2016 - current)

### Legal Experiences

The Law Offices of Kats, van der Veen and Jamison  
2011-2013

The Law Offices of Michael T. van der Veen  
2013-2014

Klein and Spector  
2014-

### Research Experience and Publications

Diosely C Silveira, Mahrukh Bashir, **Joshua Daniel**, Michelle H Lucena, Frank Bonpietro. Acute Intermittent Porphyria Presenting with Posterior Reversible Encephalopathy Syndrome and Lateralized Periodic Discharges Plus Fast Activity on EEG. Epilepsy Behavioral Case Report. 016 25;6:58-60. 2016 August.

---

---

Brar, Jaskaran, MD, Panezai, Spozhmy, MD, **Daniel, Joshua, MD**, Kirmani, Jawad, MD, Mehta, Sid, MD, Korya, Dan, MD, Treatment of Large Vessel Ischemic Strokes Not Amenable to Endovascular Therapy. International Stroke Conference 2016.

Brar, Jaskaran, MD, Panezai, Spozhmy, MD, Oberoi, R, Chukwuneke F, Mehta, Sid, ND, Korya, Dan, MD, **Daniel, Joshua, MD**, Chahal, Harina, MD, Moussavi, M, MD, Kirmani, Jawad, MD. Institution of Code Neurointervention and Its Impact on Reaction and Treatment Times. International Stroke Conference 2016.

Korya, D, MD, Moussavi, M, MD, Mehta, S, MD, Brar, J, MD, Chahal, Harina, **Daniel, Joshua, MD**, Samaan, Mena, MD, Panezai, Spozhmy, MD, Kirmani, Jawad, MD. Is Eptifibatide a Viable and Safe Option as Stand Alone Therapy for Acute Ischemic Stroke Patients? International Stroke Conference 2016.

Mehta, Sid, MD, Moussavi, M, MD, Korya, Dan, MD, Brar, Jaskaran, MD, Samaan, Mena, MD, **Daniel, Joshua, MD**, Song, Y, Kirmani, Jawad, MD. Novel Application of Reversible Parental Anti-platelets in Patients with Aneurysmal Subarachnoid Hemorrhage. International Stroke Conference 2016.

Panezai, S, MD, Chukwuneke, F, Arango A, Brar, Jaskaran, MD, **Daniel, Joshua, MD**, Korya, Dan, MD, Mehta, Sid, MD, Moussavi, M, MD, Kirmani, Jawad, MD. Overcoming Barriers to Reduce Door to Needle Time in Acute Ischemic Stroke Patients. International Stroke Conference 2016.

Brad, Jaskaran, MD, Moussavi, M, MD, Mehta, Sid, MD, Korya, Dan, MD, Chahal, Harina, MD, **Daniel, Joshua, MD**, Samaan, Meena, MD, Song, Y, Hussain, M, MD, Kirmani, Jawad, MD, Phase I Experience of Safety of Eptifibatide in Select Patients with Elective Cerebral Aneurysm Embolization. International Stroke Conference 2016.

Mehta, Sid, MD, Moussavi, M, MD, Brar, Jaskaran, MD, Korya, Dan, MD, Chahal, Harina, MD, **Daniel, Joshua, MD**, Samaan, Meena, MD, Kalola, R, Shakh, A, Hussain, M, MD, Kirmani, Jawad, MD. Safety and Efficacy of Intravenous Eptifibatide as Stand Alone Therapy for Select Acute Ischemic Stroke Patients (SIESTA Trial). International Stroke Conference 2016.

Bashir, Mahrukh, MD, **Daniel, Joshua, MD**, Bonpietro, Frank, MD, Silveira, Diosley, MD, Acute Intermittent Porphyria Presenting with Posterior Reversible Encephalopathy Syndrome and Periodic Lateralized Epileptiform Discharges on Continuous EEG. International Epilepsy Society Conference 2015.

Anil Kumar, Mysore S, MD, **Daniel, Joshua, H.M., MD, K.S., MD**, Standard Criteria Donor (Scd) Versus Expanded Criteria Donor (Ecd) Kidney Transplantation in Recipients Older than 60 Years of Age: 3 Year Outcome. Transplantation. July 15, 2006; 82(1):234-235.

---

---

Anil Kumar, Mysore S, MD; **Daniel, Joshua**, K.S., MD, R.K., MD, Comparison of Incidence and Length of Delayed Graft Function (DgF) in Kidney Recipients with Early Steroid Withdrawal (Sw) Versus Steroid Treated Group. Transplantation. July 15, 2006; 82(1):492.

Kumar, Mysore S Anil, MD; **Daniel, Joshua**, K.S., MD, M.H., MD, Successful Transplantation of Kidneys From Deceased Donors With Past Non-Skin Malignancies Without Transmission of Donor Cancer. Transplantation. July 15, 2006; 82(1): 658.

Anil, Kumar, Mysore S, MD; H.M. MD, K.M., MD, **Daniel, Joshua**. Incidence of Non-Skin De Novo Post-Transplant Malignancy in Kidney Transplant Recipients Maintained on Calcineurin Inhibitor (Cin)/Mycophenolate Mofetil (Mmf) Therapy. Transplantation. July 15, 2006; 82(1):872.

Kumar, Mysore S Anil, MD, **Daniel, Joshua**. Safety, Benefits and Complications of Ambulatory Surveillance Biopsy in Kidney Transplant Recipients. Transplantation. July 15, 2006. 82(1):642.

Anil Kumar, Mysore S; K.S., MD; H.M., MD; **Daniel, Joshua**. Long-Term Patient and Graft Survival After Kidney Transplantation in HIV Positive Patients. Transplantation. July 15, 2006. 82(1): 121-122.

Kumar, Mysore S Anil, MD, **Daniel, Joshua**. 3-Year Results of Early Steroid Withdrawal After Kidney Transplantation Monitored by Surveillance Biopsy: A Controlled Study. Transplantation. July 15, 2006. 82(1):180.

Kumar, Mysore S Anil, **Daniel, Joshua**. Safety and Efficacy of Steroid Withdrawal Two Days After Kidney Transplantation: Analysis of Results at Three Years. Transplantation. March 27, 2006. 81(6):832-839.

### **Organizations**

American Academy of Neurology

PMC- Practice Management Committee Board Member for Shore Physicians Group

Shore Medical Center Hospital Safety Committee

Stroke Committee

### **Languages**

Urdu and Punjabi

### **Hobbies and Interests**

---

---

Law, Reading, Philosophy, Cars, Traveling

**Community Outreach**

Harry Hurley WPG Talk Radio 104.1FM

Views from the Shore - South Jersey TV

6 ABC Live Medical Video Chat

WOND News Talk 1400 AM

Ocean City NJ

The Press of Atlantic City

Shore Medical Center Public Education Events - Dementia and Stroke

**Administration Roles**

Practice Management Committee

Board Accountability Committee

Medical Executive Committee

Hospital Quality and Safety Committee

Stroke Committee

---